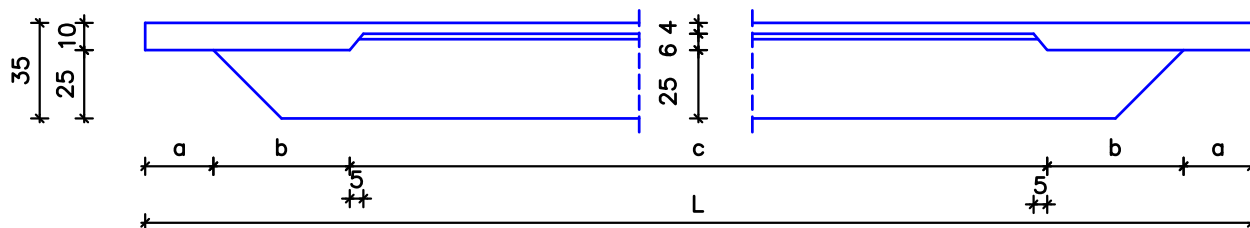
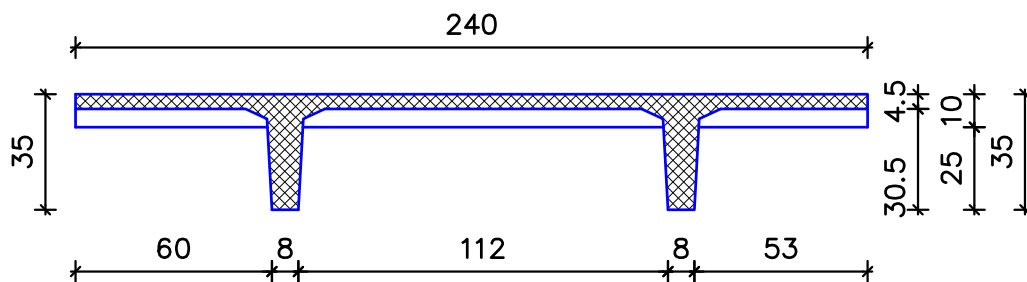


TT-35



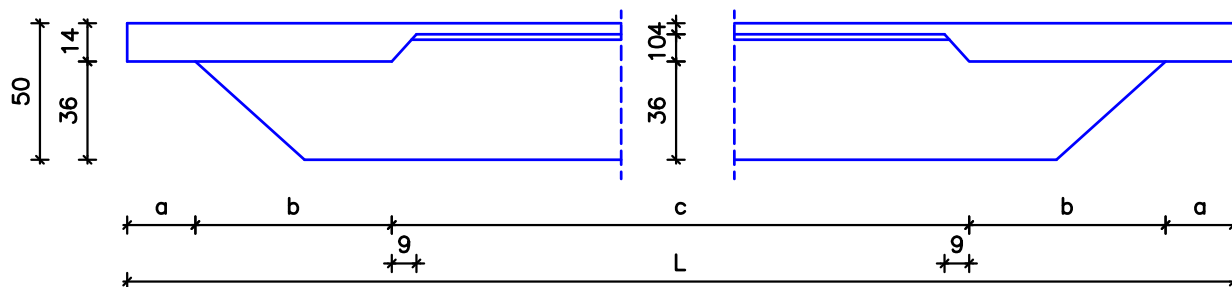
PREREZ



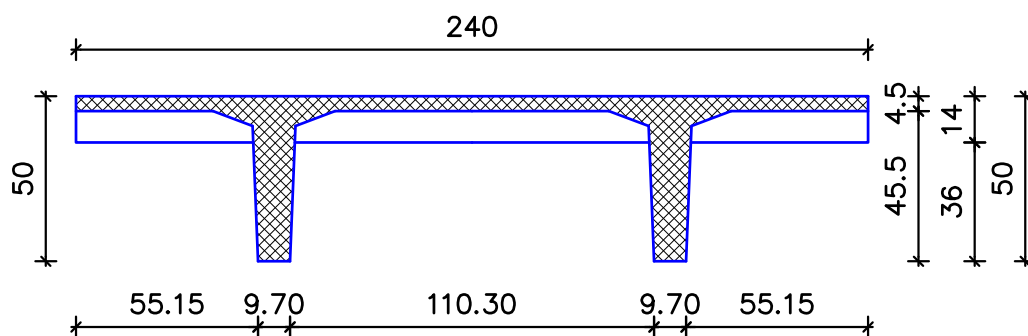
Osnovne karakteristike

L(m)	a (m)	b (m)	c (m)	Prostornina (m ³)	teža (kg)	teža (kg/m ²)
3,9	0,25	0,50	2,40	0,809	≈2022,5	≈216,08
5,0	0,25	0,75	3,00	1,055	≈2637,5	≈219,79
8,4	0,25	0,65	6,60	1,612	≈4030,0	≈199,90

TT-50



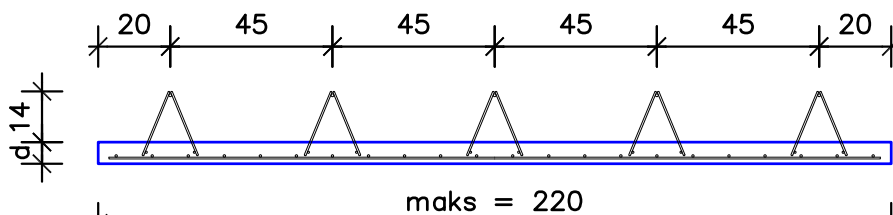
PREREZ



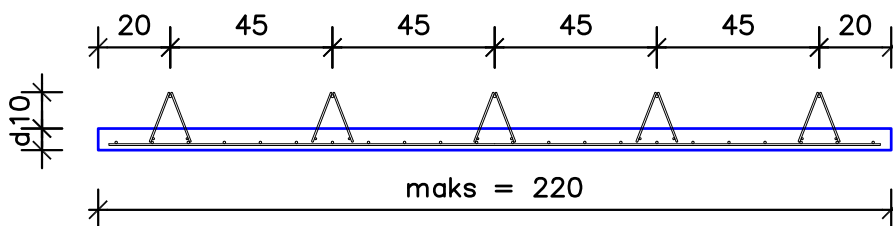
Osnovne karakteristike

L(m)	a (m)	b (m)	c (m)	Prostornina (m ³)	teža (kg)	teža (kg/m ²)
4,34	0,25	0,72	2,40	1,286	≈3215,0	≈308,66
5,0	0,25	0,75	3,00	1,445	≈3612,5	≈301,04
8,0	0,25	0,75	6,00	2,116	≈5290,0	≈275,50
10,0	0,25	0,85	7,80	2,601	≈6502,5	≈270,94
12,0	0,25	1,05	9,40	3,125	≈7812,5	≈271,27

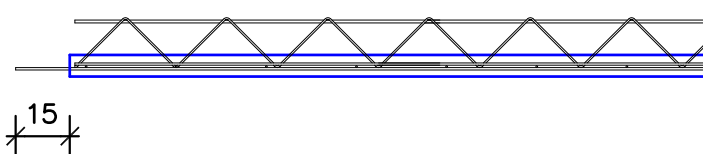
OMNIA PLOŠČA - PREREZ
 h = 16.5 cm
 d = 6.0 cm



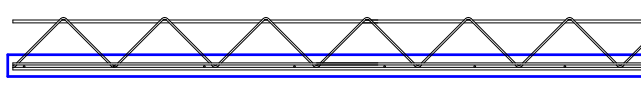
OMNIA PLOŠČA - PREREZ
 h = 12.5 cm
 d = 6.0 cm



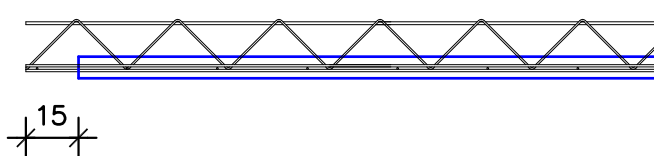
ZAKLJUČEK OMNIA
 PLOŠČE - "Brki" 15 cm



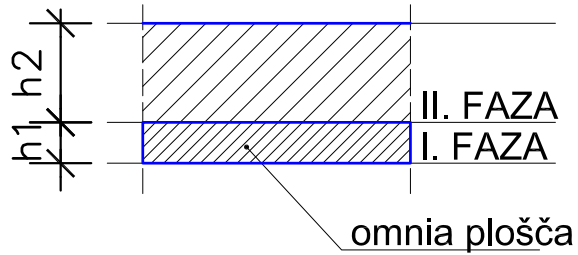
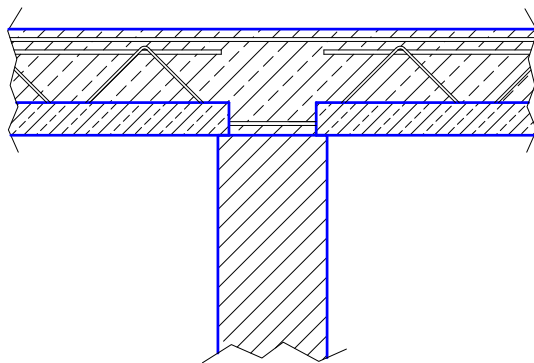
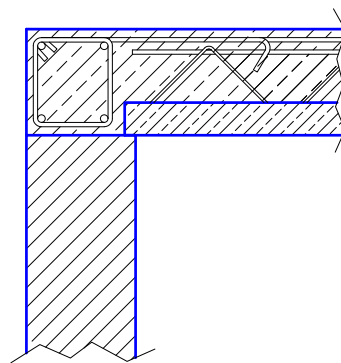
ZAKLJUČEK OMNIA
 PLOŠČE - brez



ZAKLJUČEK OMNIA
 PLOŠČE - "Komplet"



Osnovne karakteristike			
Višina rešetkastega nosilca (cm)	Debelina plošča d (cm)	Konstruktivna debelina plošče (cm)	Razmak med podporami l max (m)
9,50	5,0	12,0	2,00
	5,0	14,0	1,85
	5,0	16,0	1,70
	6,0	18,0	1,60
	6,0	20,0	1,50
12,5	6,0	16,0	2,00
	6,0	18,0	1,90
	6,0	20,0	1,80

FAZE BETONIRANJE
OMNIA PLOŠČ h_1, h_2 ... odvisna od
obtežbe in razponaDVOJNO NALEGANJE
OMNIA PLOŠČEENOJNO NALEGANJE
OMNIA PLOŠČE + AB VEZ

Dvigovanje plošč: